

# TOWN OF LAMPMAN

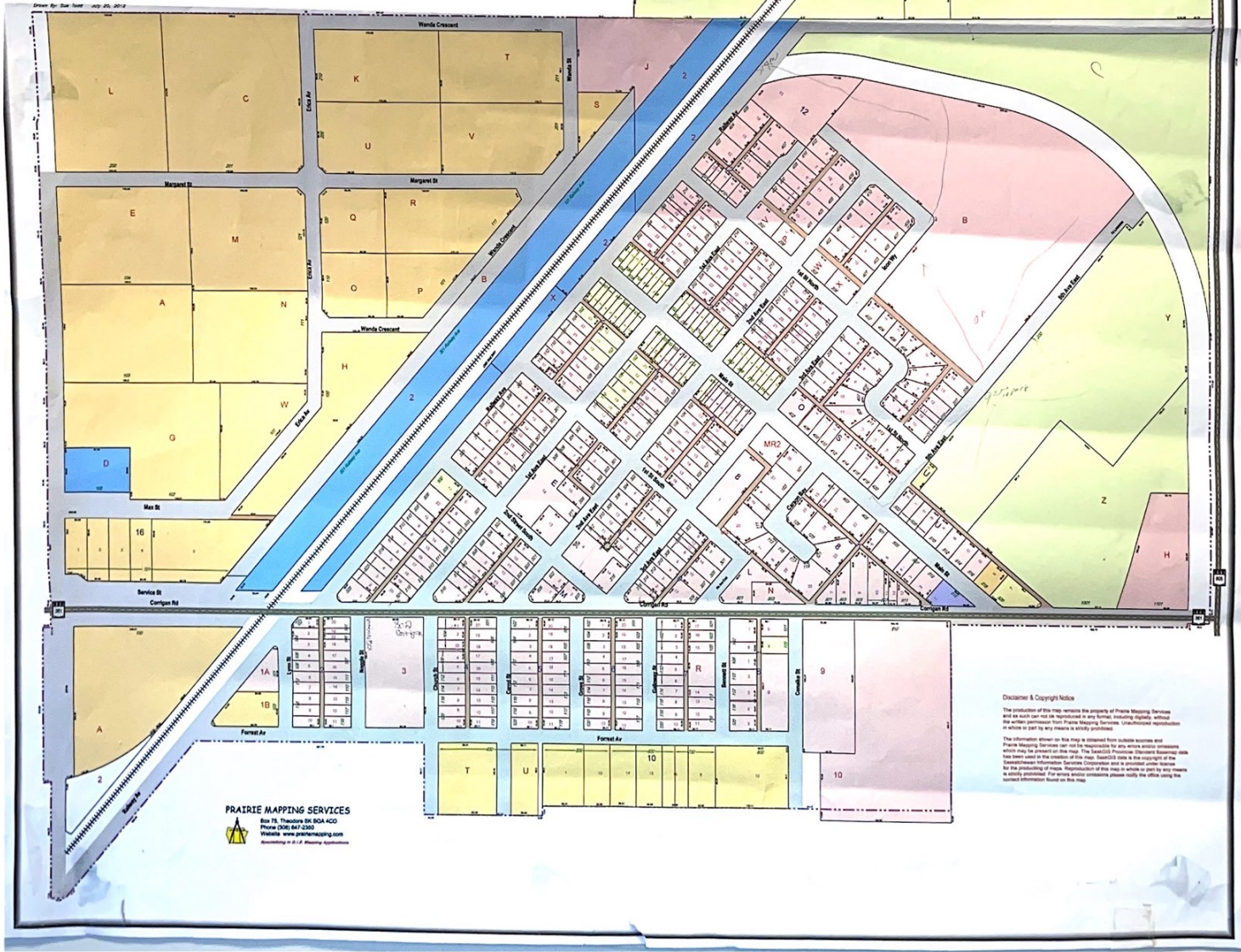
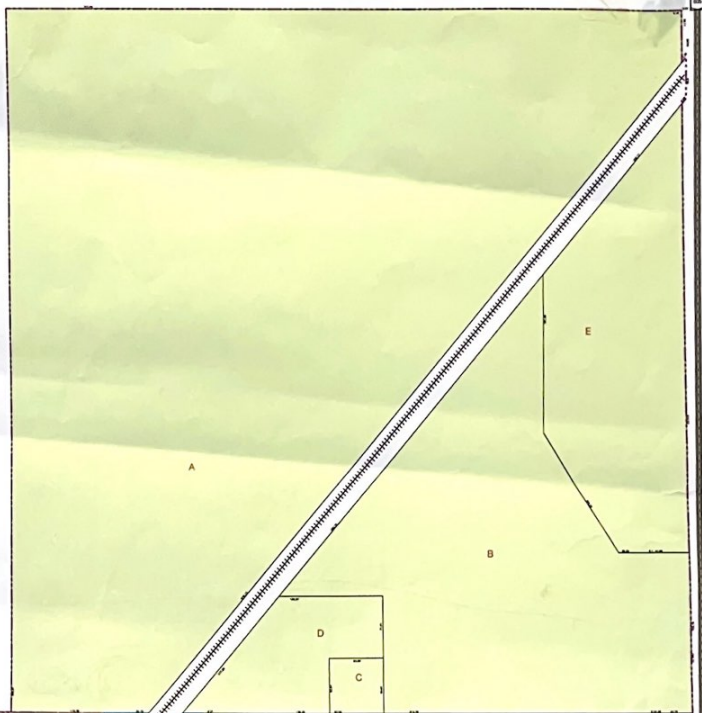
## ZONING MAP



### LEGEND

TOWN LIMITS	---
RAILWAY	+++++
PROV HIGHWAY	==
LOT	1
CIVIC ADDRESS	105
BLOCK No.	2
PARCEL No.	W
STREET/AVE	—
ALLEY/LANE	—
ZONING - AGRICULTURAL	Light Green
ZONING - INDUSTRIAL	Blue
ZONING - COMMERCIAL 1	Yellow
ZONING - COMMERCIAL 2	Orange
ZONING - COMMERCIAL 3	Light Orange
ZONING - RESIDENTIAL	Pink

0 25 50 100 200  
Scale in meters



**Disclaimer & Copyright Notice**  
 The production of this map remains the property of Prairie Mapping Services and is not to be reproduced in any form, including digitally, without the written permission from Prairie Mapping Services. Unauthorised reproduction in whole or part by any means is strictly prohibited.  
 The information shown on this map is obtained from public sources and Prairie Mapping Services can not be responsible for any errors or omissions which may be present on this map. The Saskatchewan Geomatics Information System (GIS) Information Services Corporation and is a member of the City of Regina. Reproduction of this map in whole or part by any means is strictly prohibited. For more service information please visit the office using the contact information found on this map.

**PRAIRIE MAPPING SERVICES**  
 Box 78, Theodore St BSA 400  
 Phone (306) 847-3353  
 Website: www.prairiemapping.com  
 Established in 2002